



«MAGNITO-KONTAKT» Ltd

51B, place H4, Novaya St., 390027 Ryazan, Russia, phone +7 915 622-20-57
 E-mail: olya374@rambler.ru; 451694@bk.ru <http://www.m-kontakt.ru>

PINPOINT SECURITY MAGNETICALLY CONTACT DETECTOR IO 102-26 “STAINLESS STEEL 100” IO 102-26 “STAINLESS STEEL 40”



Description

Security magnetically contact detector IO 102-26 “Stainless steel 100” & “Stainless steel 40” is designed to monitor the position of moving individual parts of structures and mechanisms, as well as for blocking of steel gates, railway containers, doors of cars, hangars and other constructive elements of buildings and structures for the opening or displacement with the results of the signal "Alarm" on the control panel, concentrator or central surveillance console.

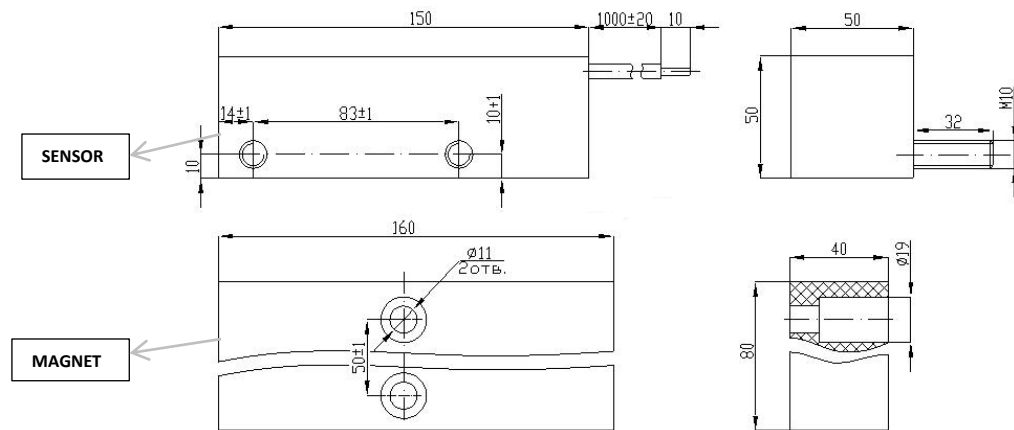
Detector consists of a magnetically controlled sensor based on a reed switch and a reference element – magnet.

When approaching the magnet to the sensor is short circuit (switching) contacts of the reed switch, at a time when the field strength generated by the permanent magnet, becomes equal to the field strength of the actuation of the reed switch.

Enclosure of the Detector IO102-26 “Stainless steel 100” & “Stainless steel 40” is made of stainless steel.

Dimensions

Dimensions in mm



Electrical characteristics

Switching current	≤2A
Switching voltage	≥300V
Switching power	30W,VA
Dimensions	Sensor - 150*50*50mm Magnet - 40*80*160mm
Weight	Sensor - 1.1kg Magnet - 1.9kg
Operating temperature	-50...+50°C
Humidity	98%
Contact resistance	0,5 Ω

Technical data

Execution type	Sensing distance	Reed switch type	Outlet type & length
-250 “Stainless steel 100”	100mm	normally open contact	Ø5,8mm, (double insulation) 1000mm
-251 “Stainless steel 100”	100mm	normally open contact	Ø8.0mm, (metal hose) 1000mm
-250 “Stainless steel 40”	40mm	normally open contact	Ø5,8mm, (double insulation) 1000mm